

SSR

Sliding suction rail

USER'S MANUAL



GRAPHIC SYMBOLS



important information



3D file or preview available



you will need tools, sub parts, accessories



keep away from source of high temperature



warnings, important notes



use respiratory protective equipment



protect from noise or eye damage



switch off before proceeding

1. General information	3
2. Equipment arrival	3
3. Product intended use and reservations	3
4. Construction	4
5. Dimensions	5
6. Installation	7
6.1 Connection of the SSR duct to the extraction system	9
7. Arm installation	9
8. Maintenance	10
9. Spare parts	10
10. Troubleshooting	10
11. Disposal	10
12. General terms and conditions of warranty	11
13. EC declaration of conformity	12

1. General information

This instruction manual contains SSR sliding suction rail use and maintenance information. SSR user should become acquainted with contents of this publication to learn about unit construction, principles of operation and means of its safe use. Manufacturer is not responsible for any consequences arising from the use of the unit against its intended purpose. Manufacturer reserves the right to make changes to improve performance and operational qualities of the product in the future without prior notice.

2. Equipment arrival

Upon arrival the user needs to thoroughly inspect the equipment and make sure there was no damage caused by the shipping carrier. If there is damage, the user needs to immediately contact their dealer.

The user should make sure that the items listed below were included with the device set:

- rail sections,
- ceiling mounting brackets
- 4x duct stop bumpers,
- rail end cap,
- rail end cap with 160mm outlet
- connection flange,
- trolley.



If the package or device are damaged upon delivery the user needs to immediately contact the dealer and draw up a protocol with the representative of the shipping company (many shipping companies consider acceptance of the shipment to be sufficient to avoid liability for damage caused during shipping).

In the case of lack of any listed items, please contact the dealer.

3. Product intended use and reservations

Sliding suction rail has been designed to allow transport of fume extraction equipment (fume arms or hose drops) between air pollution sources. SSR suction rail is used with manual and automatic welding, machining as well as automotive exhausts in car repair facilities. Thanks to sliding suction rail one or two fume extraction sets can be moved between number of air pollution emissions.



Manufacturer does not recommend use of the unit for explosive environments or extraction of aggressive fumes and gases. The temperature of captured gases should not exceed 80°C due to the elastic hose type used.

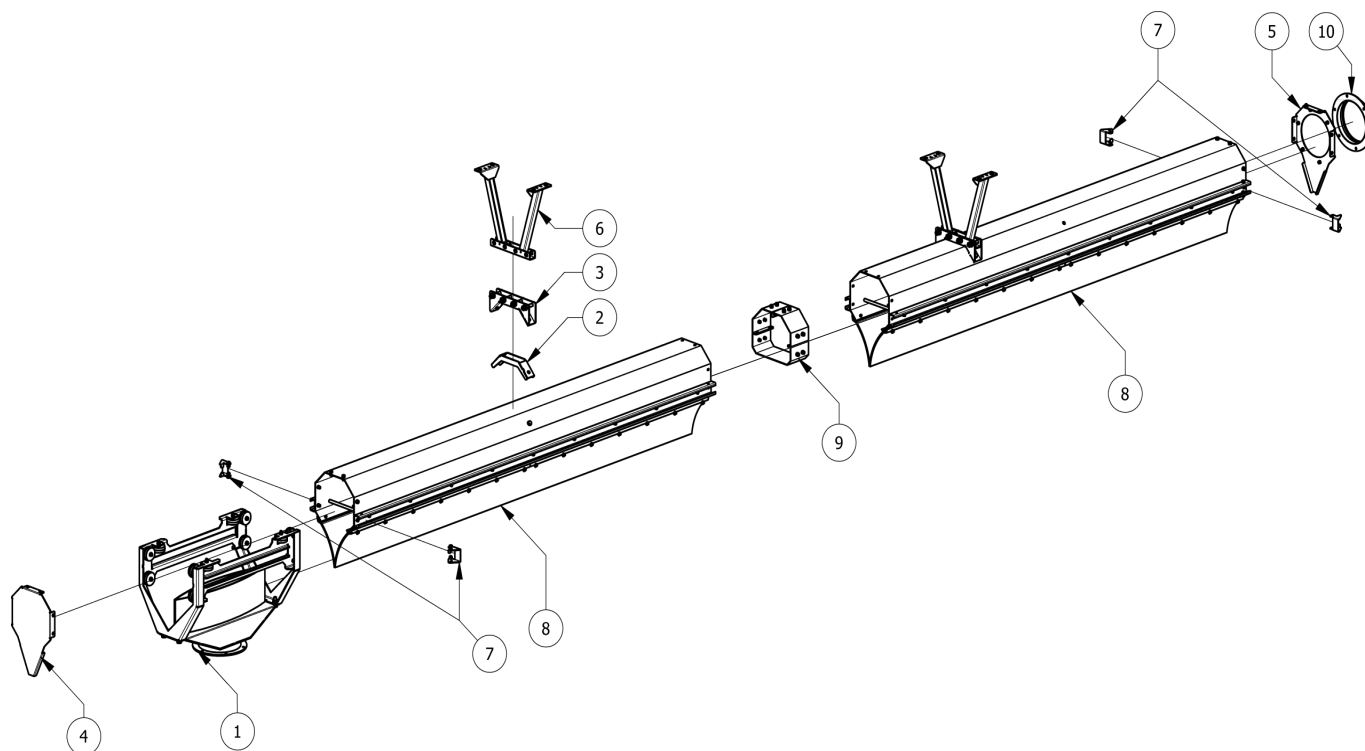


Store in dry and airy rooms. Place in a position ready for operation. Protect against possibility of shifting during transport.

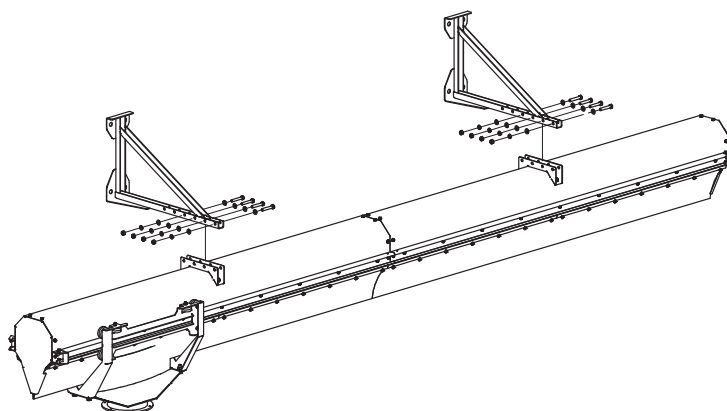
4. Construction

Sliding suction rail main construction element is standard 4 meter long segment made of aluminium profiles, reinforcements and exhaust trolley (standard inlet dia. 160 mm) travelling between self-sealing rubber flap. Suction rail segments can be connected together to form long movable extraction systems. Trolley ready to use with Oskar fume extraction arm or hose drop (set of elastic hose, nozzle and balancer).

Ceiling mounting



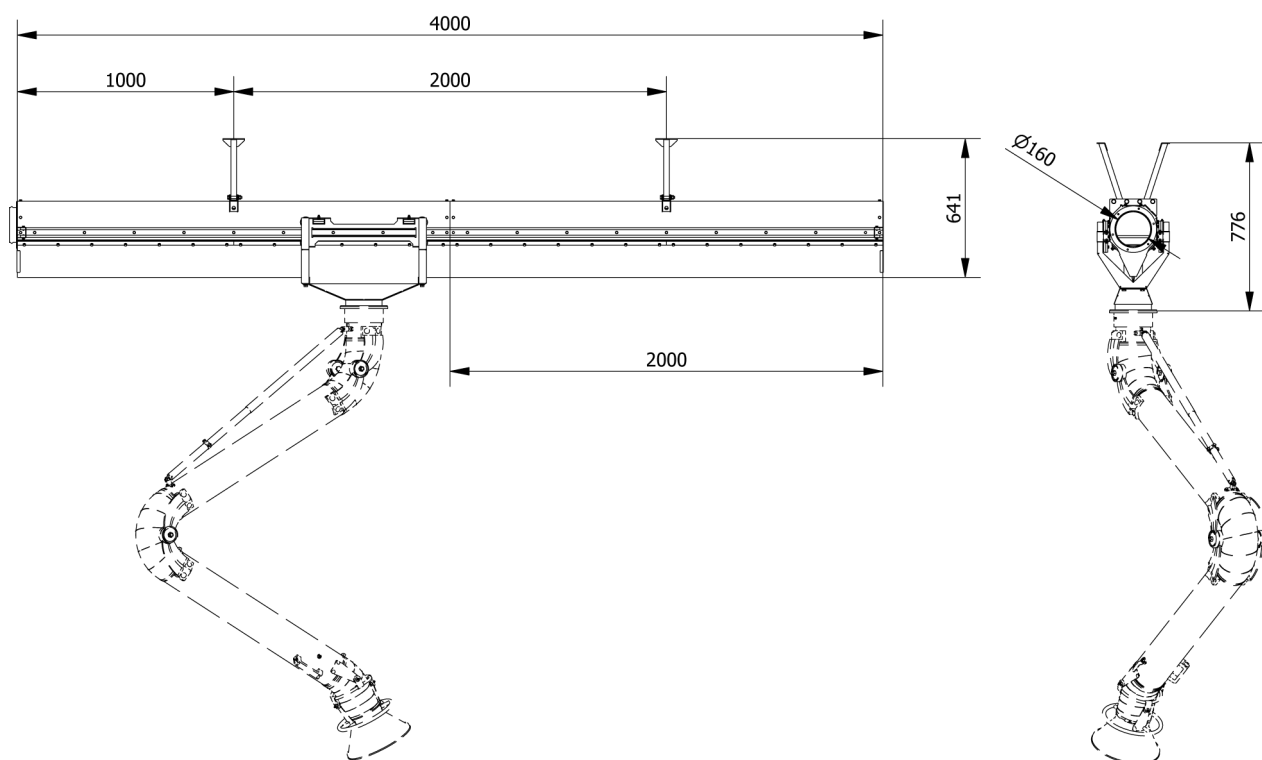
Wall mounting



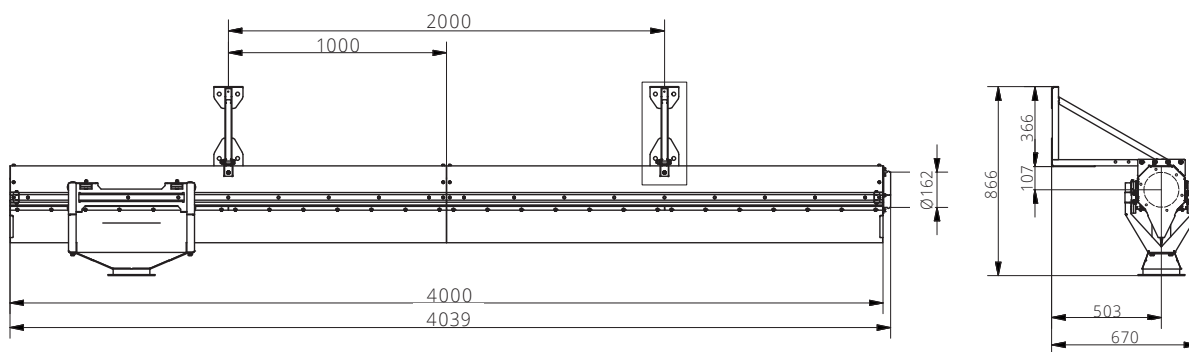
- | | | |
|--|----------------------------|--------------------------|
| 1. Trolley | 6. Ceiling hanging bracket | 11. Wall-hanging bracket |
| 2. Upper bracket part | 7. Duct stop bumper | |
| 3. Lower bracket part | 8. Suction rail (2m) | |
| 4. Rail end cap | 9. Rail connector | |
| 5. Rail end cap with 160mm dia. outlet | 10. Connection flange | |

5. Dimensions

Ceiling mounting

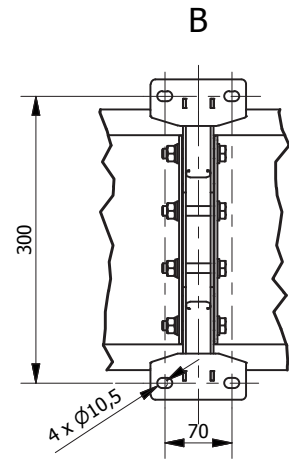
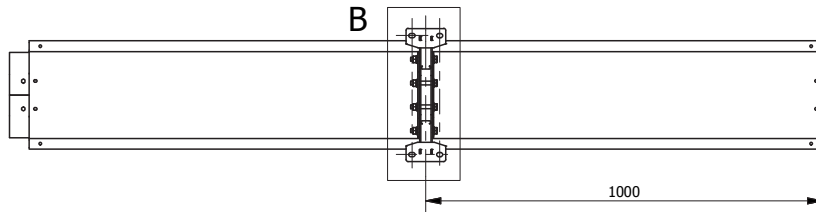
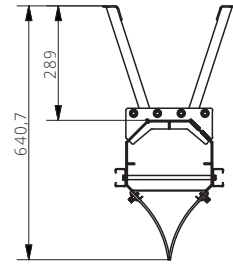
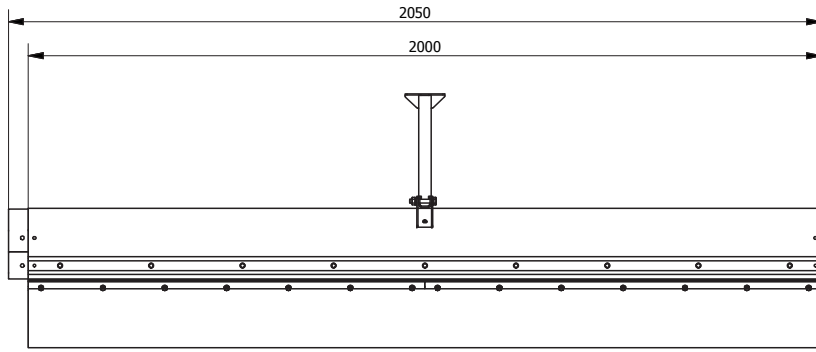


Wall mounting

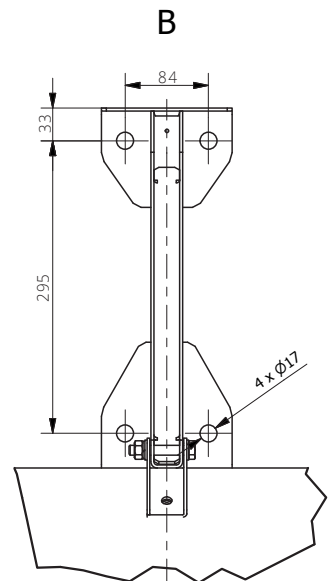
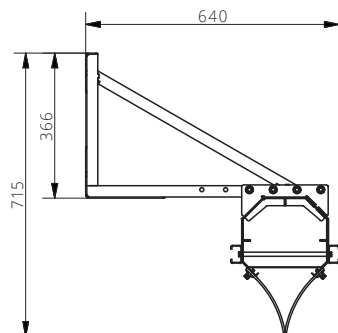
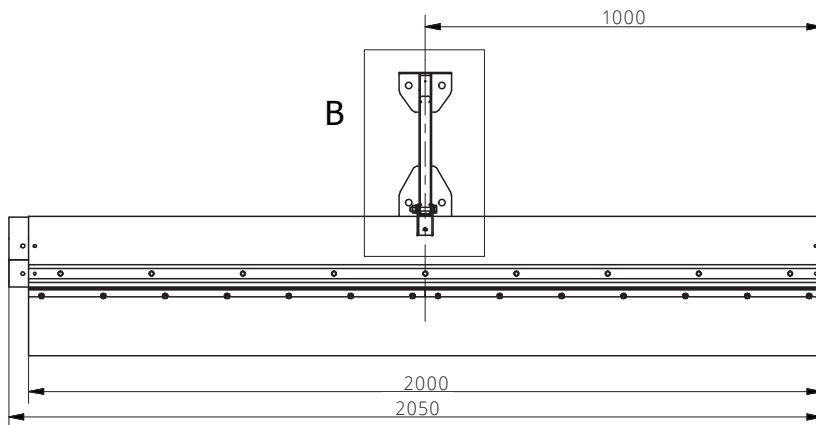


All dimensions are given in [mm]

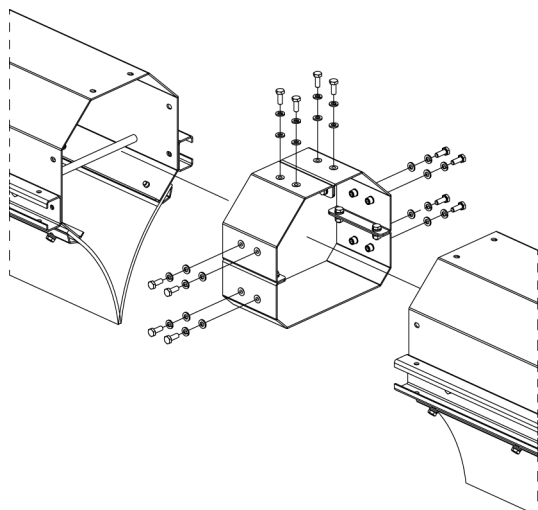
Extension - ceiling mounting



Extension - wall mounting



6. Installation



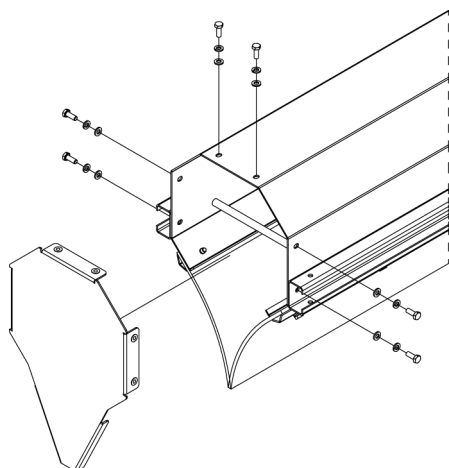
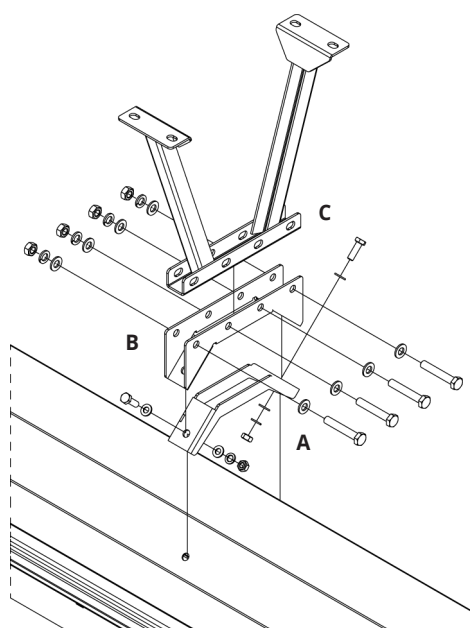
SSR segments are assembled together with M6x16 screws, spring washers and flat washers. Use the glue included for connecting the rubber flaps.

Two sets of bolts are required for installation of the ceiling hanging bracket:

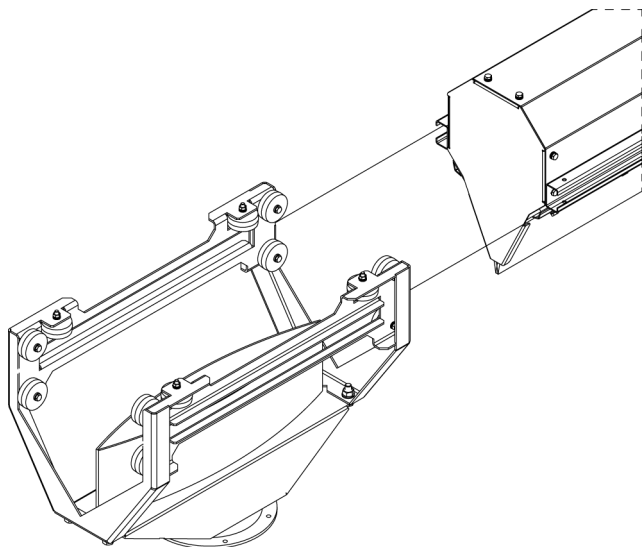
The first set consists of M10x60, M10 spring washers and M10 flat washers. (4 sets)

The second set consists of M8x25 bolts, M8 flat washers, M8 spring washer oraz nakrętki M8. (2 sets)

The component **A** is installed inside the rail, the component **B** installed from the outside of the rail using the first set of bolts. The component **C** is installed using the second set of bolts. There is one ceiling bracket per suction rail segment.

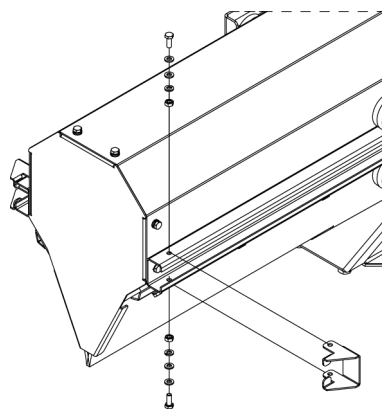


The rail end cap is installed with a set of bolts consisting of M6x16 bolt, M6 spring washer and M6 flat washer. (6 sets)

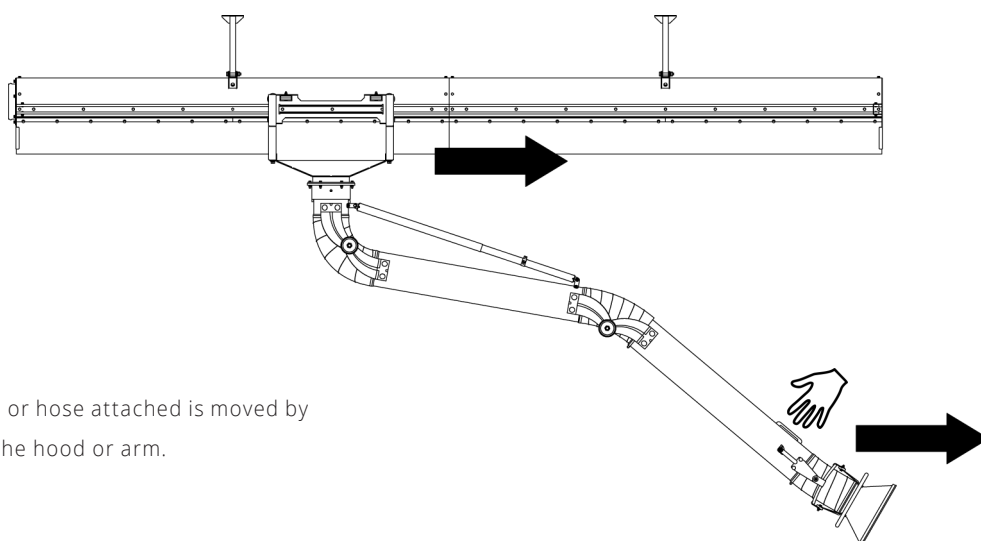


Insert the trolley in the tracks that are on both sides of the rail.
Adjust the clearance of the tracks by regulating the horizontal wheels of the trolley.

The stop bumper is installed with M6x16 bolts, M6 flat washers and M6 spring washers. (2 sets x 4 stops)



Trolley move

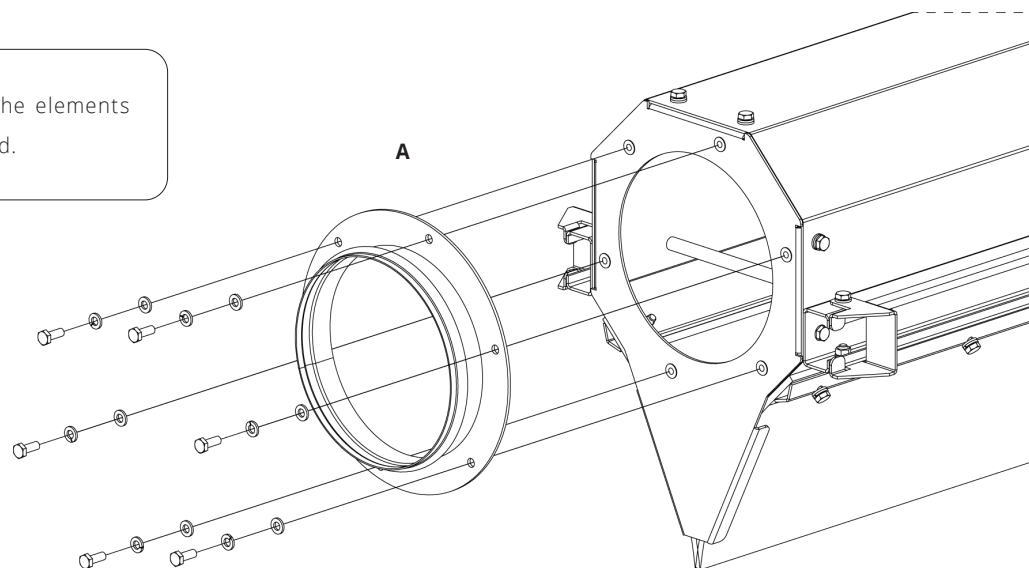


The trolley with fume extraction arm or hose attached is moved by
grabbing and pulling the handle on the hood or arm.

6.1 Connection of the SSR duct to the extraction system



The device or some of the elements may arrive pre-assembled.



In order to connect the rail to a duct pipe or a ventilation system it is required to install a connection flange **A** using the set consisting of M6x16 bolts, spring washers and flat washers. (5 sets)

7. Arm installation

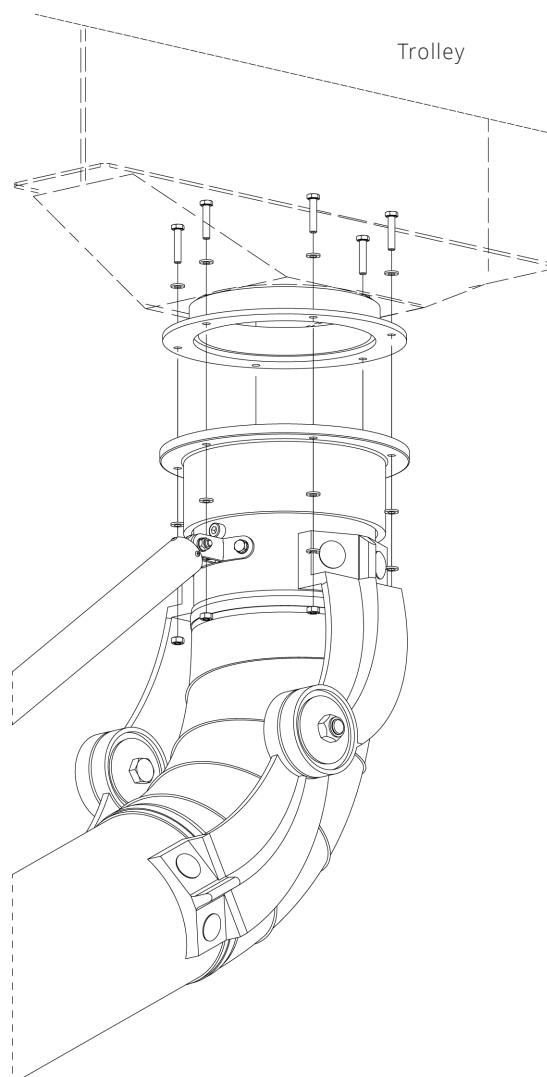
The trolley allows the installation of a 160mm fume extraction arm or hose. It requires M6x30 bolts, two M6 flat washers, M6 spring washer and M6 nut. (5 sets)



When installing the fume arm position it in such a way that the safety stopper is parallel with the SSR and is facing the connection flange.



Maximum load capacity of the trolley is 30 kg.



8. Maintenance

DAILY	MONTHLY	YEARLY
Keep the device clean and check the condition of rubber flaps	Monitor the patency and the condition of the rail Monitor the condition and adjust the mounting brackets and connectors	Monitor the rubber connections of the rail Tighten the bolts in connectors, mounting brackets and the trolley

9. Spare parts

In order to determine the type of spare parts, contact an authorized distributor or the Menegon company. Prepare the data from the nameplate: device name, serial number and part number. Use only original parts supplied by Menegon.

10. Troubleshooting

SYMPTOMS	POSSIBLE CAUSES	PROCEDURE
Lower air volume	blockage inside the hood or duct	inspect the interior and clean it
difficult trolley handling	loose or damaged horizontal wheels of the trolley	adjust or replace the wheels
high noise level	lack of tightness of rail connections	adjust the rail connectors
	rubber wrapping up	pull the rubber to its correct position

11. Disposal

The area of work should be properly separated and marked. Plastics and metals must be sorted as far as possible. Disposal must be carried out in accordance with local legal requirements.



Dust on the internal parts of the device can get into the respiratory tract and lead to skin irritation. Appropriate health and safety protection must be taken during disposal work.

12. General terms and conditions of warranty

1. The present warranty is granted by Menegon Spółka z o.o. with its registered office in Mokry Dwór (postcode 83-021) at Mokry Dwór 6c, Tax ID No. (NIP): 583-27-65-135, National Business Registry No. (REGON): 192622385, entered into the Register of Entrepreneurs of the National Court Register at the District Court for Gdańsk-Północ in Gdańsk, , 7th Commercial Division of the National Court Register, under No. KRS 0000072042, hereinafter referred to as the "Manufacturer" or "Warrantor".
2. The provisions hereof shall apply only to purchasers who are entrepreneurs understood as natural persons, legal persons or organisational units referred to in Article 33(1) §1 of the Civil Code, pursuing business activity on their own account.
3. The Manufacturer shall grant warranty for the period of 12 months as of the date of purchase, however not longer than 18 months of the date of manufacture (for possible extension of the warranty period please contact the authorised sales representative).
4. The warranty shall include defects caused by the fault of the manufacturer, i.e. physical defects of the Manufacturer's Products arising from reasons inherent in the product and resulting from the use of defective materials, caused by structural errors, or defective workmanship, provided that operation and maintenance of the device was performed always in accordance with the appended Operation and Maintenance Documentation and that the other conditions specified herein have been met.
5. The warranty shall not include parts of devices subject to normal wear, consumable materials (filters, gaskets, bulbs, fuses, etc.).
6. A warranty repair shall take place by means of replacement of the damaged components with others - the replaced components become the property of the Warrantor. If it is impossible to determine the cause of damage, the Warrantor shall repair the product within 14 business days of the date of reporting the defect at the latest, unless there is a need to import untypical or not easily available parts.
7. The warranty shall not include: mechanical damage or damage resulting from improper operation, improper exploitation, natural wear of materials, partial or as a whole, random events or abnormal atmospheric phenomena (force majeure events), improper transport, storage or use, improper installation or installation performed by an entity which is not authorised by the Manufacturer, modifications or structural changes made by the user or third parties without the consent of the Manufacturer.
8. Loss of warranty shall take place in case of: independent repair and modifications without a written notification and consent of the Manufacturer, breaking the seals placed by the Manufacturer, using other consumable components that those indicated and recommended by the Manufacturer.
9. The Warrantor shall be liable for physical defects only up to the standard value of components. The standard value of components shall be understood as their value according to the prices applied by the Manufacturer on the date of warranty repair.
10. The warranty shall not include losses caused by downtime while awaiting for warranty repair and property damage, i.e. indirect and direct losses and costs connected with the need of disassembly and reassembly of the device. The Warrantor shall not be liable for any lost profits.
11. This warranty shall only be valid if the invoice for purchase of the products was paid and if the maintenance inspections are performed each year (in case of extension of the warranty period).
12. The Warrantor shall reserve the right to charge the costs of inspection to the claimant if the claimed product proved to be functional and if the defects to be repaired or the components to be replaced are not subject to warranty or the terms and conditions of the warranty exclude the liability of the Warrantor.
13. A defect shall be reported within 14 days after its discovery. Failure to comply with the above deadline shall result in expiration of the warranty entitlements.
14. The Warrantee shall report a failure, defect or fault only in writing by sending a complaint by e-mail or letter to the address of the manufacturer. The complaint shall contain an accurate description of the defect and indicate the date on which it occurred.
15. The Warrantor shall handle the complaint within 14 days of delivery of the defective goods to the Warrantor or verification at the location where the goods are installed, subject to a possibility of extension of the above period if it is necessary to perform detailed technical tests, of which fact the Warrantor shall immediately inform the Warrantee.
16. The Warrantor shall inform the Warrantee on handling the complaint in writing, by phone, fax or e-mail.
17. If the guarantee claim is accepted, the Warrantor shall decide each time on the repair of the defective product, its replacement with a product free of defects, reduction of its price or replacement with a product of the same intended use and similar technical parameters if the product subject to claim was withdrawn from the offer.
18. The defective product shall be repaired within 30 business days of the date of handling the complaint. If there is a need to import spare parts from abroad, perform additional laboratory testing, etc., the deadline for repair may be extended until the time of performance of necessary actions, however not more than up to 90 business days of the date of handling the complaint. The deadlines specified in the preceding sentences shall apply also to replacement of the product with a product free of defects, reduction of its price and replacement of a defective product with a product of the same intended use and similar technical parameters respectively.
19. In connection with the granted warranty the parties hereby exclude application of the provisions of the Civil Code regarding warranty for defects, therefore the Customer shall not be entitled to any other claims resulting from defects of the delivered product apart from those referred to above.
20. Any disputable matters arising in connection with the granted warranty shall be settled by the court competent for the registered office of the Manufacturer.
21. This warranty shall be governed by the Polish law.

13. EC declaration of conformity

DECLARATION OF CONFORMITY CE

The manufacturer: Menegon Sp. z o.o., Mokry Dwór 6c, 83-021 Mokry Dwór, Polska

Confirms the following product: SSR Sliding Suction Rail

meets the requirements of the following European directives:

- Directive 2006/42/EC of the European Parliament and the Council of 17 May 2006. on machinery and amending Directive 95/16/EC (recast).

and the following standards:

- EN 12100-2:2005 / A1: 2009 EN Safety of machinery - General principles for design - risk assessment and risk reduction.

Confirmed in: PL-Mokry Dwór
Confirmed on: 2016-08-09



Wojciech Skup
Dyrektor Produkcji



www.menegon.com.pl

Authorized representative